

Stainless Steel PBX [Phone Dialer](#) with 2 Dialing Modes (Keypad or Auto Dial) USER MANUAL



This phone is a top rated quality wall-mounted telephone handset made up with stainless steel housing, zinc allow keypad, die-cast zinc hook, PC handset and double-sided integrated circuit board.

This is a tough, robust wall-mounted telephone that can be used in a number of applications, including:

- Normal dialing using keypad – provide local or long distance phone services in public or private areas such as lobbies, halls, phone booths, prisons, etc.
- Off-hook automatic dial (hot dialer) – Provide off-hook auto dialing to reach emergency services in elevators, lobbies, etc.
- Intercom - use the auto dial feature to provide point-to-point communication.

Key Features:

1. Supports two (2) operation modes: Normal dialing using keypad or auto dial when number is programmed to work when off-hook.
2. Stainless steel housing, high mechanical strength, strong impact.
3. The phone can be used as an independent or integrated telephone communication system with program-controlled switches and couplers.
4. It must be used with a PBX or an analog landline (VoIP is not supported).
5. Top rated anti-noise and voice clarity regardless of distance & number of extensions.
6. Each phone features redundancy and independent operation. The malfunction of any other phone doesn't affect when installed within the same line or extension.
7. This device has an automatic gain function for the voice quality to prevent degradation over distance or number of extensions used.
8. Strict quality control guidelines during assembly of all components. It uses quality double-sided integrated circuit design and materials.

Modes of Operation:

1) Normal dialing: If there is no programmed number, the caller takes off-hook, and dials a number (local or long distance as set). The called party hears ringing → pick up the handset to answer the call, both sides under normal conversation. At the end of the call, hang back the handset.

2) Automatic dialing / point-to-point intercom / hot dialer: If there's a programmed number, the phone will auto dial it when caller takes the handset off-hook.

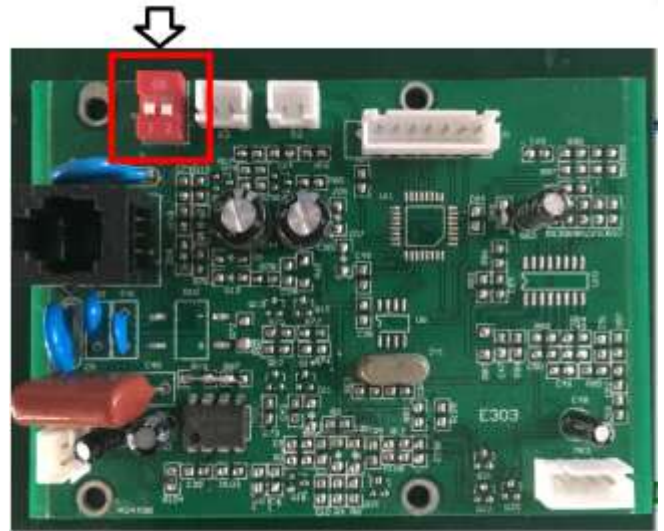
Stainless Steel PBX Phone - Programming / Setting of Automatic Dialing

Preparation: Locate the 2 switches on circuit board diagram below.

Below are the steps to program a number to be automatically dialed when taking handset off-hook:

1. Connect phone to a telephone line (a PBX extension and/or analog landline).

2. Take phone's handset off-hook and make sure you can hear dialtone.
(Important: Place handset on your ear so you can hear the beeps. Please ignore any recordings or load tones you may hear while programming this device).
3. Toggle switch 1 (figure 1) from position 1 to ON. You should hear a beep sound (1st beep).
4. Then toggle switch 1 back from position ON to position 1. Now you should hear a second (2nd) beep sound.
5. Next, toggle switch 2 from position 2 to ON. Now you should hear the third (3rd) beep sound.
6. Next, toggle switch 2 back from position ON to position 2 (no beep sound this time!).
7. Next, input the auto-dial number (e.g. 786-221-5997) and then hang up.

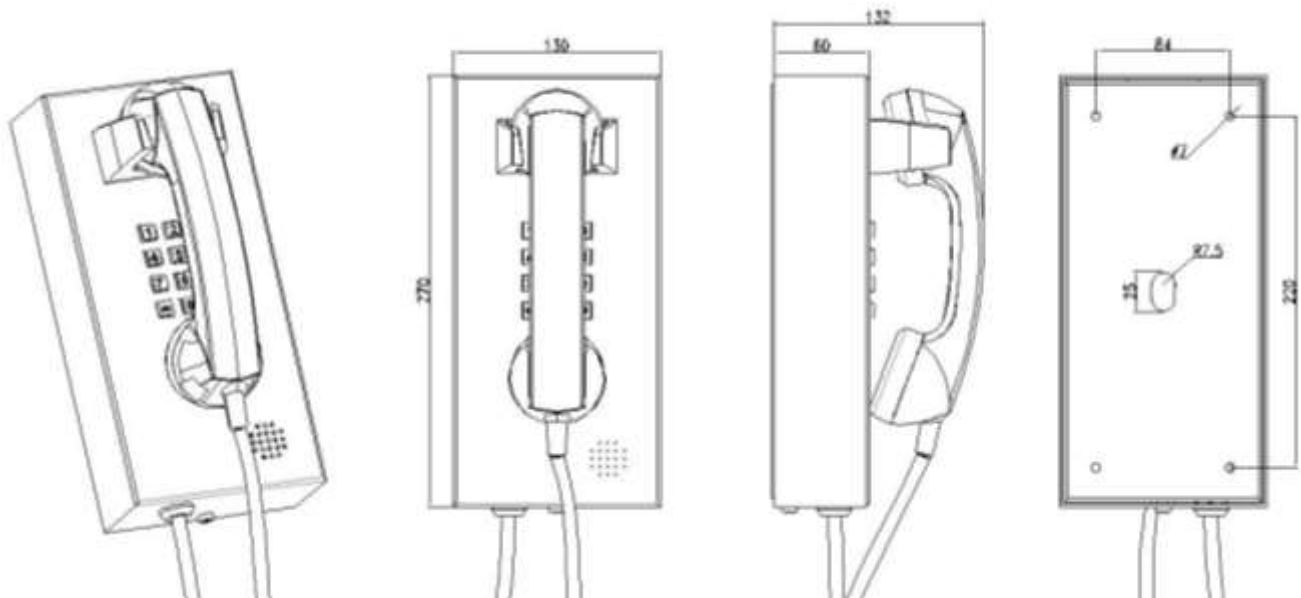


If set up correctly, it will automatically dial after going off-hook the next time.

Reset instructions:

Follow steps 1-6 above, then do not input any number on step 7. Now the phone can be used for normal dialing.

Product Dimensions:



Technical Parameters:

Ring signal level ≥ 80 dB | Frequency response: 250 – 3000 Hz | Supply voltage: 48 – 60 V | Feed current: 25mA | Call transmission index: SLR < 12 dB, RLR < 1 dB, STMR > 10 dB | Defend grade: IP54 | Operating temperature: -40C to +60 C | Relative humidity: $< 95\%$ (at room temperature) | Atmospheric pressure: 80 ~ 110KPa | Environmental noise: < 70 dB | Base dimensions: 10.6" x 5.1" x 2.3" (270 x 130 x 60 mm) | Installation: Wall-mounted. | Weight: 3.7 lbs (~ 3KG)

Warranty, Service and Support:

This product has a one (1) year warranty under normal use. Please contact us at <https://www/hqtelecom.com> for additional information about this product.